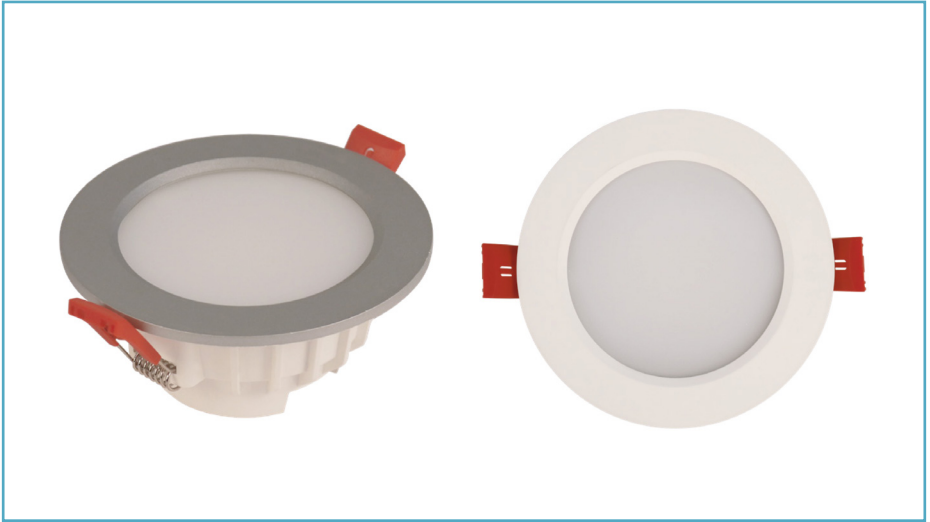


TIME LED[®]

Stellar 10W Mini Panel Interchangeable LED Downlight - Silver/White

Installation and Operating Instructions



Read and follow instructions before operating your LED Downlight.
Save this manual for future reference.

Package includes:

- 1 x Stellar 10W Mini Panel Interchangeable Led Downlight
- 1 x Silver Bezel
- 1 x White Bezel
- 1 x Manual

Safety:

- Installation of this luminaire should only be carried out by a qualified electrician or competent person to the current building and IEE Wiring Regulations (BS7671).
- Before installation/maintenance, ensure that all mains supply to the luminaire is switched off and the circuit fuses are removed or switched off.
- Check the total load on the circuit (including when this luminaire is fitted) does not exceed the rating of the circuit cable, fuse or circuit breaker.
- Please note the IP (Ingress of Protection) rating of this luminaire when deciding the location for installation.
- This product is IP44.

INS-769515-V2

TIME LED is part of Pitacs Limited. For customer support contact:

Bradbourne Point, Bradbourne Drive, Tilbrook, Milton Keynes, Buckinghamshire MK7 8AT

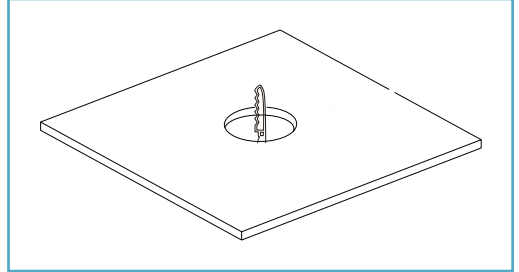
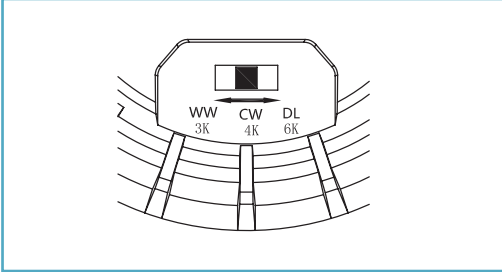
T: +44 (0)1908 271155 F: +44 (0)1908 640017 E: info@timeled.co.uk W: www.timeled.co.uk



Product Code	769515
Size (mm)	Ø110x55
Watts	10W
Lumens	700lm
Dimmable	Yes
Beam Angle	110°

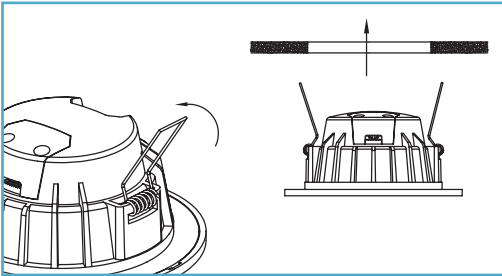
Lifespan	15,000 Hours
Colour Temp	Tri-Colour/CCT 3000K/4500K/6500K
Material	PBT Body (Aluminium Inside)
IP Rating	IP44
Voltage	220-240V
Warranty	2 Years

Installation Instructions:



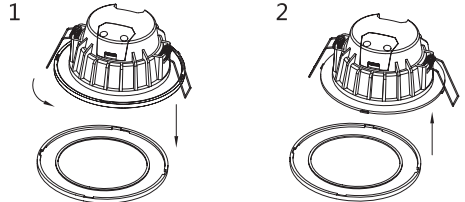
- 1) Select a colour temperature using the slide switch located on the back of the luminaire.
 WW = Warm White
 CW = Cool White
 DL = Daylight

- 2) Cut a suitable hole in the ceiling as per the cut-out details. Ensure that it does not damage electrical cables, water/gas pipes or ceiling joists.



- 3) Hold back the spring clip and push the lamp in. Make sure the downlight is fixed securely and flush against the ceiling.

Bezel Change Instructions:



- 1) Remove current bezel by rotating anti-clockwise and gently pulling off.
- 2) Attach new bezel by aligning spaces with the nodules along the edge and rotating clockwise to secure.

Cleaning:

- Do not use any chemical or abrasive cleaners.
- Clean product with a soft, dry cloth.

Warranty:

- This product is warranted to be free of defects in materials, design and workmanship for 2 years from the date of purchase (conditions apply, please see TIME LED website for further details). If a suspected fault should develop in this time, please contact us via the address on the front.

Recycling Advice:

Waste Electrical products should not be disposed of with household waste. Please recycle where facilities exist. Check with your local authority or retailer for recycling advice.

Full Technical specification available upon request. Contact info@timeled.co.uk for PDF.

TIME LED®

Stellar 10W Mini Panel Interchangeable LED Downlight - Silver/White