

ELEMENTS ABILITY BATTEN QUICK FIT MICROWAVE SENSOR KIT

SPECIFICATION SHEET

PRODUCT CODE: 314148

Optional quick fit microwave occupancy sensor to fit with the 6ft and 5ft Elements Ability Batten lights.



50,000 HOURS
LIFESPAN

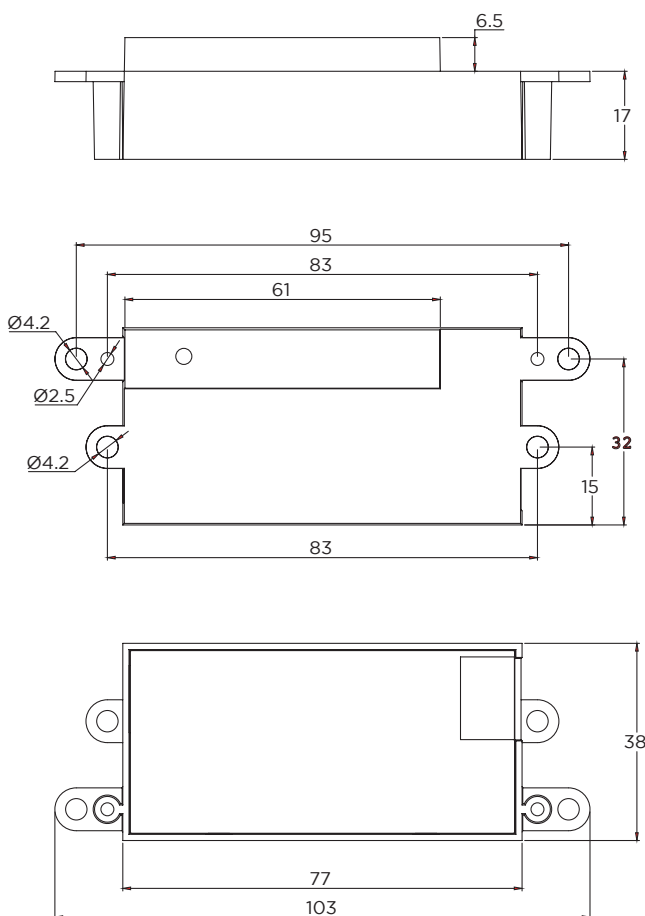


5 YEARS
WARRANTY

SPECIFICATION

Product Code	314148
Diameter/Length	103mm
Depth/Width	23.8mm
Height	38mm
Lifespan	50,000hrs
Warranty	5 years
IP Rating	IP20
Material	PC
Packaging	White box colour label
Current (A)	0.35
Hertz (Hz)	50/60Hz
Power	0.3mw
Voltage	230V
Power Factor	>0.9
Input Frequency	50/60Hz
UGR	<26
ROHS	Yes

Max load 400W @ 220V



TIME LED is the Lighting Division of Pitacs Limited

Bradbourne Point, Bradbourne Drive, Tilbrook, Milton Keynes, Buckinghamshire MK7 8AT

T: +44 (0)1908 010345 E: led-sales@pitacs.com W: www.TIMELED.co.uk



SPEC_314148_V1_JULY2022

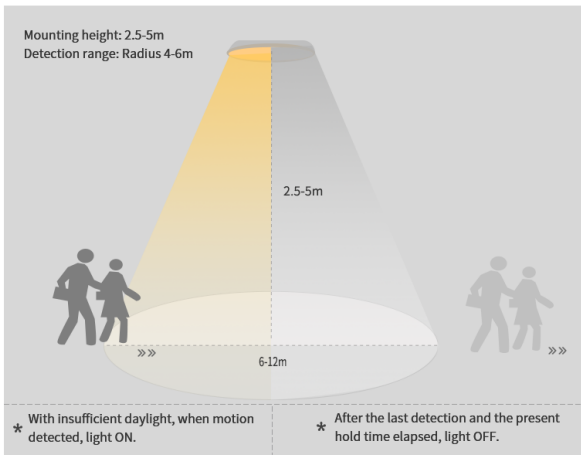
SPECIFICATION SHEET PRODUCT CODE: 314148

Optional quick fit microwave occupancy sensor to fit with the 6ft and 5ft Elements Ability Batten lights.



Sensor Functions

Automatically ON/OFF function

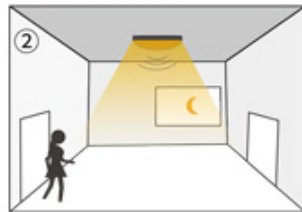


Automatically ON/OFF function

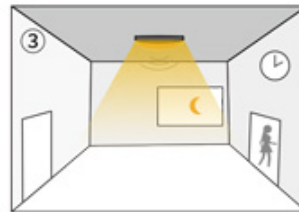
» The daylight threshold is set to "10Lux/25Lux/50Lux"



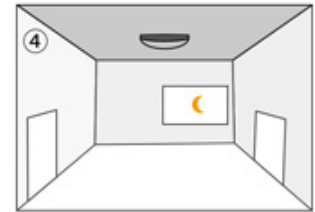
With sufficient daylight, even when motion detected, light remains OFF.



With insufficient daylight, when motion detected, light ON.

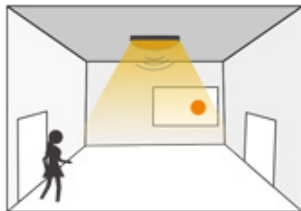


After people leave the detection area, light remains 100% brightness within hold time.

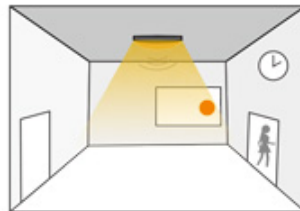


After the last detection and the preset hold time elapsed, light OFF.

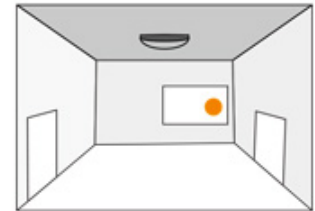
» The daylight threshold is set to "Disable". Light on when detect movement, After people leave, Light off after Hold-time.



When motion is detected, the sensor will switch on the light to 100% brightness.



After people leave the detection area, light remains 100% brightness within hold time.



After the last detection and the present hold time elapsed, light OFF.

TIME LED is the Lighting Division of Pitacs Limited

Bradbourne Point, Bradbourne Drive, Tilbrook, Milton Keynes, Buckinghamshire MK7 8AT

T: +44 (0)1908 010345 E: led-sales@pitacs.com W: www.TIMELED.co.uk

